



Epsilon Camp 2023 Planning Guide

Dear Epsilon Camp 2023 Families:

Welcome to Epsilon Camp 2023!

This planning guide provides detailed information on preparing for camp, required action items prior to camp, what to bring to camp, various aspects of living on campus including lodging, meals, and amenities, and a sample camp schedule. Please read this guide carefully and in its entirety, including accessing all relevant web links, to make sure you understand completely what to expect and what is expected of you. We hope we have provided you with everything you need to know to confidently prepare for camp. Contact [Natalya Hung](#), Camp Director, with any questions you may have.

While we plan extensively prior to camp, invariably last-minute adjustments will be needed with regard to schedules, classroom locations, amenities available, and so on. All such up-to-date information will be [posted on our website and/or on Slack](#). This planning guide is intentionally vague with regard to the exact schedules and locations, and **will not** be updated during camp to communicate the most current information.

We look forward to seeing you this summer!

Sincerely,
Epsilon Camp Staff

Table of Contents

Table of Contents	2
1. Registration, Forms, and Payment	4
Registration	4
Forms and Payment	5
Changes and Adjustments	6
2. Camp Communications	7
Slack Workspace	7
At-Camp Emergency Contact Number	7
3. Arrival and Departure	8
Arrival Day	8
Scheduled Events	8
Departure Day	8
Directions to Campus	8
Campus Parking	9
Mid-camp Arrivals and Departures	9
4. Lodging and Meals	10
Lodging Options	10
Residential Life	10
Laundry	11
Wireless Access	11
Meal Plans	11
Special Dietary Needs	12
Lost Key Cards	12
5. What to Pack	13
Clothes/Apparel	13
Toiletries	13
Recreation	13
Student Supplies	14
Other Items	14
Mailing Packages to Miami University	14

6. Camp Organization	15
Levels and Counselor Groups	15
Academic Program	15
Sample Daily Schedule	16
Parent Program	16
Volunteer Opportunities	17
Interacting with Faculty and Staff	17
Informal Socializing	17
Visitors	17
7. Students Doing Mathematics	18
Daily Assignments	18
Note Taking	18
Electronics/Calculator Policy	18
Outside Courses During Camp	18
8. Math Skills Prerequisites	19
Pythagoras Level (Ages 7–8)	19
Euclid Level (Ages 9–10)	19
Gauss Level (Ages 10–11)	20
Conway Level (Ages 11–12)	20
9. Health and Safety Protocols	21
Signing In and Out	21
Emergencies	21
COVID-19 Protocols	21
Other Health Considerations	22
Nut Allergies	22
10. Miami University Information	23
Maps	23
Campus Amenities	23
Nearby Attractions	23
Local Day Camps	24
Miami University Rules and Regulations	24

1. Registration, Forms, and Payment

Families register for camp via the [registration portal](#) on our website. To login to the portal, please use the credentials (email and password) created during the application process. If you are a returning family that did not go through the application process this year, please use the credentials from last year's registration. If you do not remember your password, you will be able to reset it the first time you login to the system. Please note that you will have access to the registration portal only if we have received a deposit for your camper.

The registration process consists of two stages, detailed below.

Registration

Starting **March 1, 2023**, you will be able to login to the portal and register all members of your group who are planning to attend camp. Each camper is required to attend with at least one parent or guardian. Additional family members, including non-camper siblings, can join if such an arrangement makes sense for your family. Some of the attendees may arrive after the camp starts, and/or depart before the camp ends; during registration, you will be able to indicate arrival and departure dates for each family member.

At least one parent or guardian must be in attendance at camp at all times. For those families who plan to switch off the supervision of a camper from one parent or guardian to another sometime during camp, parents must ensure that there is sufficient overlap between the two adults to account for various contingencies, such as travel delays. Please take this requirement into account when making travel plans for those participants who will be arriving and departing throughout the program.

Note that all persons planning to attend camp for any amount of time, whether it's part of one day or the full duration of camp, and whether or not they are lodging on- or off-campus, are considered attendees and must be registered.

At this stage, you will also fill out a form indicating your housing preferences (lodging options are described in the [Lodging and Meals](#) section). If you would like to share lodging with another family, we encourage you to use [Slack](#) to find a family to share with, and indicate your choice on the form. If you are unable to find a family to share with, we will do our best to match you with another family.

Families that complete the camp attendee registration and submit their housing preferences by **March 15, 2023** will have their housing assignment confirmed on March 15, and can move on to the second stage of registration.

Forms and Payment

Once your lodging assignment is confirmed, you will be able to use the registration portal to fill out required forms and view your invoice.

Both forms and payment will be due **May 1, 2023**. Any money already received (such as deposit and registration fee) will be reflected in the amount due. Please review the charges carefully and contact us with any questions or corrections.

Please note that registrations for which final payments and/or required camp forms have not been submitted by the May 1 deadline will be subject to a \$200 late fee. In addition, any housing assignments or preferences previously confirmed will only remain guaranteed if both the final payment and the forms are submitted by the deadline.

We prefer payments by check (if you choose to pay electronically, please note that the registration system charges a service fee of 4% for credit card payments and 2% for e-checks). Checks should be made payable to “Epsilon Camp” and include the camper’s name on the subject line. In addition, a Payment Agreement, signed by the person responsible for payment, must be submitted via the registration portal. You will receive an email receipt with your payment confirmation once we receive both your check and the signed Payment Agreement.

The following additional forms must be submitted:

- Medical Information and Medical Consent (required for all campers)
- Immunization Record (required for all minors, both campers and non-campers)
- Adult or Minor Attendee Waiver (required for all attendees)
- Access Needs, Dietary Restrictions, Allergies (required for all attendees; Miami Dining Services will be informed of all food allergies and special dietary needs)
- Adult or Minor COVID-19 Acknowledgement (required for all attendees)
- COVID-19 Vaccinations (required for all attendees)
- Code of Conduct (1 per family)
- Volunteer Preferences (for adult attendees)

In order to successfully complete all the forms by the May 1 deadline, please be aware of the following requirements, and allow enough time to obtain the appropriate documentation.

Health insurance requirement for campers: We require proof of health insurance that fully covers urgent and emergency care at medical facilities in the area local to Miami University for the duration of camp. For international families, temporary U.S. insurance must be obtained.

Childhood immunization requirement for all minors under the age of 18 (both campers and family members attending camp): We require proof of childhood immunizations against communicable diseases, as specified by the state of Ohio for K-12 school entry. For a detailed description of the requirements, see [Ohio Immunization Summary for School Attendance](#).

COVID-19 vaccination requirement: All participants are required to be [up to date](#) on their COVID-19 vaccinations, including any boosters recommended by the CDC at the time of camp. Exemptions from the COVID-19 vaccine requirement will be considered on a case-by-case basis.

Optional field trip information and sign-up forms will be emailed to you closer to the start of camp.

One t-shirt and one Epsilon cap are included free of charge for each registered camper. If you would like to purchase additional t-shirts and/or caps, you may do so through the registration portal.

Changes and Adjustments

Please let us know as soon as possible if your plans change and you need to make any adjustments to your registration (for example, if you need to register an additional non-camper attendee).

Adjustments to your bill may be made once Epsilon Camp receives the final comprehensive camp bill from the university. Adjustments may include but are not limited to: lodging and associated costs (number of nights, etc.), lost access card/lockout charges, damages, and late check-out fees. Please be aware that the lost access card fee is \$35.

2. Camp Communications

As we get closer to camp, the [Epsilon Camp 2023 page](#) (password: erdos) on our website will be updated with links to important camp documents, such as this Planning Guide, COVID-19 Protocols, camp schedules, and so on. In addition, we plan to utilize Slack to facilitate communication between Epsilon Camp attendees and staff.

Slack Workspace

Epsilon Camp maintains a Slack workspace for parents or guardians of registered Epsilon Camp 2023 campers. An invitation to join the workspace will be emailed to you once your camp deposit is received. We use Slack extensively during camp to announce last-minute changes to the schedule, coordinate camper activities, post resources for parents, and so on. In addition, some families find it helpful to connect with other Epsilon parents in the months leading up to camp; Slack can help facilitate that process.

Channels in the Epsilon Camp 2023 workspace include:

- **#pre-camp-discussions**: meet other parents and share information prior to camp
- **#pre-camp-announcements**: important announcements prior to camp
- **#parent-program**: parent program information and resources
- **#social-committee**: volunteers organizing social events for kids and adults
- etc.

Please familiarize yourself with Slack, and install the Slack app on your phone prior to the start of camp. If you have any questions about using Slack, or need help getting access to the workspace, please contact [Natalya Hung](#).

At-Camp Emergency Contact Number

Upon arrival at camp, you will be provided with a contact number of the Epsilon Camp staff for use in urgent or emergency situations.

3. Arrival and Departure

Arrival Day

The arrival date is **Sunday, July 9, 2023**. Camp check-in is planned from **2pm to 5pm**. During this time, Epsilon Camp staff will be on hand to welcome your family and orient you to the campus, and university staff will be on hand to provide check-in services. The location for check-in will be provided as we get closer to camp.

Families who are unable to arrive during the check-in window should contact [Natalya Hung](#) to discuss options and obtain instructions for early or late arrivals. Please plan to do this prior to finalizing your travel plans, particularly if you expect to arrive significantly later than the 5pm check-in time. If you need assistance figuring out a travel plan that works with our check-in period, please do not hesitate to ask.

Scheduled Events

The Epsilon Camp 2023 Welcome Dinner is **tentatively scheduled for 6pm to 8pm on Sunday, July 9**. Information about its venue will be provided at the time of check-in.

Please plan to attend a **required Parent Orientation session on the morning of Monday, July 10**, immediately after dropping your campers off for their first class.

Departure Day

The departure date is **Sunday, July 23**. Check-out is planned from **7am to 11am**. University staff will be on hand to collect key cards and check your family out of their lodgings. The University will charge a fee for any access card not returned at check-out time.

Directions to Campus

Epsilon Camp will be held on the campus of [Miami University](#) in Oxford, Ohio. Families may wish to fly in to either Cincinnati/Northern Kentucky International Airport (CVG, approximately an hour south of Oxford) or Dayton International Airport (DAY, approximately an hour northeast of Oxford). Please see the Miami University [website](#) for further information and directions to campus. If you choose to rent a car, parking will be available on campus.

We are investigating the possibility of running a shuttle to transport Epsilon families arriving on July 9 from the Cincinnati airport (CVG) to the Miami University campus, as well as a shuttle to transport families leaving on July 23 back to the Cincinnati airport. Such an arrangement will depend on the level of interest expressed by families, and will incur additional cost. Details, including shuttle departure times and prices, will be determined in the coming months.

In addition to any shuttle options provided by Epsilon Camp, there are several companies that provide shared or private shuttle services from both airports:

- Airport Shuttle and Rental (no website) charges \$95 one way for one person plus \$10 for each additional family member, for a maximum of seven people per vehicle or three people per private car. Call (513) 896-6605 for more information and reservations.
- [Executive Transportation](#) provides a private shuttle service from CVG. Please call (859) 261-8841 for more information and reservations.
- [Empire Transportation](#) provides private shuttle services from both airports. Please call (513) 860-3324 for more information and reservations.

Please reserve early as the number of available vehicles is limited.

Campus Parking

Camp families are able to park free of charge in any of the Miami University's "red tag" parking lots. Specifically, there is ample parking available immediately next to the Heritage Commons Apartments. If there are restrictions on which parking areas are available for our use, they will be specified at the time of check-in. You will be able to register your vehicle for a free parking permit closer to the time of camp, or upon arrival on campus; a link for parking registration will be provided.

Mid-camp Arrivals and Departures

Check-in and check-out process for family members arriving after July 9 or departing before July 23 will be detailed closer to the time of camp. Family members must make sure to return their key cards to the University staff at check-out to avoid lost key card charges.

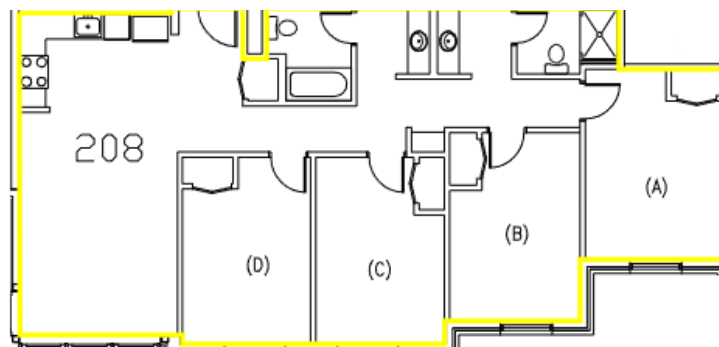
4. Lodging and Meals

On-campus housing is required (except by permission in special circumstances), as it is the best way for all attendees to experience the camaraderie and companionship of other camper families. The informal playing and chatting that occurs in the evening is a great way to deepen your camp experience, and we find that families that stay on campus tend to have the most positive experiences overall.

Lodging Options

Epsilon Camp families will be housed in the [Heritage Commons Apartments](#) on the Miami University campus. Each air-conditioned apartment has four private bedrooms with two shared bathroom areas. Each private room within the apartment is furnished with a full bed (73" x 53" mattress size), a desk, desk chair, dresser, and night stand; each bedroom also has a closet. In addition, each apartment has a kitchen with a full sized refrigerator, stove/oven, microwave, and dishwasher. A common living room area is furnished with a couch and a dinette set.

A sample apartment floor plan is shown below. Depending on the apartment location within the building, sometimes bedrooms C and D are separated from A and B by the living room.



On-campus housing is \$185 per night. Camper families can choose to share an apartment with another family; if you wish to share lodging, you may find your own apartment mates from among those attending. If you do opt to share, please accept that we will be unable to accommodate requests for apartment mate changes during camp.

Residential Life

Each bedroom with a full bed will be supplied with two pillows, two light blankets, a sheet set, two towels, and two washcloths. In addition, replacement linens (sheets, towels, and washcloths) will be provided. Rooms will be prepared with beds made, replacement linens set aside, and cleaning spray/towels in the apartment for guest use. Apartments will be serviced twice a week, on Tuesdays and Fridays, with bathrooms cleaned and trash removed.

All Epsilon Camp residents are expected to observe quiet hours from 10pm to 7am.

Please note that our contract with Miami University **does not allow Epsilon Camp participants to serve, furnish, sell, or consume alcohol on campus.**

Please also note that Miami University campuses are designated Smoke Free Environments. **Smoking and all tobacco related products are prohibited** in all University owned facilities and on all University owned grounds.

Laundry

There are laundry facilities at the Heritage Commons available for guest use. Laundry costs are \$1.75 for one load in the washer, and \$1.75 for one load in the dryer. You will need to bring your own detergent if you wish to do laundry.

You must purchase laundry funds through an online store managed by Miami University's conference services (link to be provided closer to the time of camp). If you purchase laundry funds prior to your arrival on campus, your participant access card will be loaded at the time of check-in, and you will be able to use it at the laundry facilities throughout your stay. If you purchase funds after arrival on campus, please allow for 12 hours for the funds to upload to your participant access card.

Wireless Access

On-campus and in-room guest wireless internet is provided at no charge. Attendees agree to abide by the [Miami University computer-use policy](#). Epsilon Camp is not responsible for wifi speed issues.

Meal Plans

Meals will be held in the Maplestreet Dining Commons. The Maplestreet dining location provides an all-you-care-to-eat buffet serving a variety of hot and cold entrees, side dishes, salad bar, desserts, and multiple beverage options.

Meal plan charges are as follows:

- 0-5 years: Free with adult
- Ages 6 and up: \$35 per day

Most attendees staying on campus purchase a dining plan and will be billed accordingly. Please contact [Natalya Hung](#) if a member of your family group needs to opt out of the dining plan (for example because of extreme dietary restrictions). For those not on the dining plan, individual meals can be purchased at the door with a credit card, at walk in rates.

Please note that meals are expected to be consumed inside the dining hall; there will be no to-go options available. There is limited outdoor seating available adjacent to the dining hall; food can be carried outside to eat but there will be no subsequent reentry. Furthermore, no outside food or to-go containers can be brought into the dining hall.

Campers must be supervised by parents during breakfast and lunch; counselors supervise campers during dinner, except those campers who have been signed out by their parents.

In addition to the Maplestreet Dining Commons, we expect Garden Dining Commons to be open and available for the Epsilon Camp participants' use. If you are signed up for a meal plan, you should be able to use your provided meal card to eat at the Garden Dining Commons instead of Maplestreet, if you find yourself closer to the north side of campus. Several other locations on campus will have food available for purchase a la carte. More information, including hours of operation, will be provided closer to the time of camp.

Welcome dinner on Sunday, July 9 is free of charge for the campers. All other attendees present on July 9 will be charged for the Welcome Dinner at the rate of \$15 for ages 6-8 and \$25 for ages 9 and up (children 5 and under are free with paying adults).

Special Dietary Needs

You will be asked to note special dietary needs for each camper and attendee during registration. The dining hall makes an effort to accommodate the most common dietary issues, but to ensure that they are able to accommodate your needs, we will be passing the information submitted via the Dietary Restrictions and Allergies form on to the dining staff.

If you have unusual or extreme dietary needs, please fill out the [Miami University Self Disclosure Dietary Request Form](#), and request the dining staff to contact you directly to discuss your needs.

Lost Key Cards

Lost key cards should be immediately reported to the Miami University conference services staff. Please call (513) 330-1717. A replacement card can be purchased for \$35 through an online store (link to be provided closer to the time of camp) managed by conference services. Once the replacement card fee is paid, a new card will be issued.

5. What to Pack

This is a suggested list for each family member; your needs may vary but we hope this is helpful. Various supplies campers will need for doing mathematics are detailed in the [Student Supplies](#) section. **Please label all camper items so that lost and misplaced items can be returned to campers. Do not** bring any expensive items you do not absolutely need. Epsilon Camp and Miami University cannot be responsible for lost, stolen, or damaged items.

Clothes/Apparel

- 8 pairs of socks
- 8 underwear
- 8 shirts or t-shirts
- 6 pairs of shorts
- 2 pairs of long pants
- pajamas/sleepwear
- 1 rain jacket with hood (please note that the Midwest is known for thunderstorms and strong seasonal storms; make sure you and your camper are prepared!)
- 1 sweater/sweatshirt (for some cool summer nights)
- 1 hat or sun visor
- 2 pairs of comfortable walking shoes (to allow one pair time to dry if it becomes soaked in the rain)
- 1 pair of sandals/flip-flops

Toiletries

- Bar of soap
- Shampoo/conditioner, deodorant
- Toothbrush, toothpaste, floss
- Comb/hairbrush
- Nail clippers

Recreation

- Swimsuit, beach towel, goggles (for pool use)
- Soccer cleats/shin guards if you play soccer (there may be scrimmages/games)
- Frisbee
- Hiking shoes if you plan to go on any hiking excursions
- Board games, chess sets, puzzles, Rubik's cubes
- Books, clip-on light for nighttime reading
- Musical instrument if you wish to practice

Student Supplies

- Backpack (labeled with camper name)
- 1 pocket folder (labeled with camper name)
- 1 1.5" three-ring binder for handouts (labeled with camper name)
- 50 sheets of 3-hole punch paper, wide-ruled
- 50 sheets of 3-hole punch graph paper
- 3 pens, 2 pencils, 1 eraser, and a pencil sharpener
- Ruler
- Bow compass with a screw thread allowing for precise control (please do not bring ball bearing compasses)
- Protractor
- High-quality colored pencils
- Scissors
- Scotch tape

Other Items

- Water bottle
- Sunscreen
- Umbrella
- Laundry detergent
- Laundry bag (for collecting soiled clothes and carrying them to the laundry facilities)
- Kitchen supplies (if you are staying in an apartment and plan to utilize the kitchen)
- High-quality face masks, such as N95, KN95, or KF94 (masking requirements TBD)
- At-home COVID-19 rapid antigen tests (testing requirements TBD)

Mailing Packages to Miami University

It is possible to mail packages to Miami University ahead of your arrival on campus. Please address packages with the camper's name ("Joe Smith" in the example below) and mail to the following address:

Joe Smith, Epsilon Camp
c/o Miami University Conference Services
701 E. Spring Street
Oxford, OH 45056

6. Camp Organization

Levels and Counselor Groups

Campers will be placed into groups of 10–12 students, and each group will have a dedicated counselor. Camper groups within each level do not imply any difference in ability. Camper levels are as follows:

- Pythagoras Level: 7- and 8-year-olds
- Euclid Level: 9- to 10-year-olds who are new to camp or 9- to 10-year-olds who have previously completed any part of Pythagoras Level
- Gauss Level: 10- to 11-year-olds who have completed the Euclid Level
- Conway Level: 11- to 12-year-olds who have completed the Gauss Level

Each camper group within a level will have its own group name as well. For example, in Pythagoras Level there may be a Thales group and a Hypatia group.

Academic Program

Epsilon Camp's academic program runs Monday through Friday during the first week of camp (July 10-14) and Monday through Saturday during the second week of camp (July 17-22), for 11 total days of instruction. Attendance is required at all academic sessions.

Saturday, July 15 and Sunday, July 16 have no academic commitments for the campers. On these days, Epsilon Camp will plan optional field trips to some of the nearby attractions; families may also choose to explore the area on their own, or simply stay on campus and relax.

The schedule for Saturday, July 22 is modified from the regular academic day schedule. On this day, courses meet for the last time, and the camp will officially conclude with a closing ceremony in the evening.

Campers are enrolled in several courses for the duration of the camp; the specific course topics vary based on the camper level. In addition, campers in Euclid Level and above attend Office Hours, where they work on daily assignments with support from faculty and counselors.

Math Stations, which are optional for Pythagoras Level campers and mandatory for the older campers, provide additional opportunities for playful mathematical exploration. Campers may choose to attend a different Math Station each day; some examples of past offerings include origami, Zometools, and strategy games.

Sample Daily Schedule

Camp announcements and schedule updates will be posted on our website and/or on Slack beginning July 9, 2023. Epsilon Camp reserves the right to change the camp daily schedule at any time.

The following **sample** schedule is an **example only**, both in times listed and camper topics. This is intended to give parents a feel for the basic structure of the day. **Please expect specific times, locations, and course topics to differ on the actual 2023 schedule.**

Time	Pythagoras		Euclid			Gauss	Conway	
	Thales	Hypatia	Archimedes	Pappus	Brahmagupta	Cantor	Mirzakhani	
7:00 AM	Breakfast Roaring Fork Dining Hall (open 7-9 am for breakfast)							
8:15 AM	PARENTS: You MUST sign your camper in with their counselor in their first classroom no later than 8:25 AM.							
8:30 AM	Blanchard and Jin Cucharas 105	Number Theory Montenegro Columbine C324	Geometric Conjectures Champney Columbine C317	Number Theory Hill Columbine C322	Projective Geometry Biro Columbine C325	Roots of Unity Zeit Columbine C114		
9:50 AM		Methods of Proof Thomas Columbine C317		Methods of Proof Tomforde Columbine C322	Roots of Unity Zeit Columbine C325	Projective Geometry Biro Columbine C114		
10:20 AM		Methods of Proof Thomas Columbine C317		Methods of Proof Tomforde Columbine C322	Roots of Unity Zeit Columbine C325	Projective Geometry Biro Columbine C114		
11:40 AM	Lunch Roaring Fork Dining Hall (open 11-1 for lunch) Parents MUST sign out campers from their classroom by 11:40 AM. Parents are responsible for campers during lunch and afternoon break.							
12:30 PM	Afternoon Break 12:30 to 2:15 PM Parents MUST sign in campers to their classroom by 2:20 PM.							
2:25 PM	Blanchard and Jin Cucharas 105	Geometric Conjectures Hill Columbine C324	Number Theory Tomforde Columbine C325	Geometric Conjectures Champney Columbine C322	Sets and Functions Thomas Columbine C317		Group Theory Montenegro Columbine C114	
3:45 PM		Office Hours Columbine C324		Office Hours Columbine C317	Office Hours Columbine C322	Office Hours Columbine C325	Office Hours Columbine C114	
4:10 PM		Office Hours Columbine C324		Office Hours Columbine C317	Office Hours Columbine C322	Office Hours Columbine C325	Office Hours Columbine C114	
5:20 PM	Dinner Roaring Fork Dining Hall (open 5-7 for dinner) Parents MUST sign campers out from their counselor in the cafeteria by 6:10 PM.							
6:10 PM	Parents MUST sign campers in to their Math Station by 6:40 PM.							
6:40 PM	Math Stations (optional)	Math Stations Parents MUST sign campers out of their Math Station no later than 7:40 PM.						
7:40 PM	Evening Free Time No Counselors On Duty Parents are responsible for their campers at all times when campers are not signed in to their Counselor Groups.							
Prompt official sign-in and sign-out of each camper is required; no verbal sign-outs allowed.								

Parent Program

Epsilon Camp offers a Parent Program, which is designed to support parents in nurturing mathematical, educational, and social/emotional growth in their children. Parent Program sessions are optional, and are held in the mornings and some afternoons while campers are in class. The Parent Program schedule will be announced during the Parent Orientation session on Monday, July 10. Non-camper siblings are able to attend Parent Program sessions if needed or desired.

Parents will have a chance to hear from each member of the faculty, sometimes about the topics they are working on in class with the campers, but also about their professional

research or their personal mathematical path. There are also a number of round-table and group-discussion sessions where parents can share their questions and experiences on topics like executive functioning, homeschooling, advocating with schools, math circles, summer opportunities, and so forth. We often have expert speakers on a variety of topics relevant to acceleration and giftedness, sometimes in person, and sometimes over Zoom.

Volunteer Opportunities

Epsilon Camp could not run without the efforts of parent volunteers. Volunteer opportunities include: walking children to dinner, helping campers navigate the cafeteria, developing the yearbook, planning the closing ceremony slideshow, and organizing social activities for children or adults. We ask all parents to fill out a Volunteer Preferences form during registration.

Interacting with Faculty and Staff

Epsilon Camp provides plentiful opportunities for informal interactions between faculty, staff, campers, and parents. For example, many stimulating discussions take place in the dining hall, where families often mix with faculty. Please note, however, that parents are not permitted in camper classrooms when classes are in session. Furthermore, ***if you have any concerns with regard to your camper's needs, whether academic or social/emotional, we ask that you bring them up with the Camp Director***, rather than approaching members of the faculty directly.

Please refrain from offering end-of-camp monetary gifts to camp faculty or counselors. A small gift or a card hand-made by your camper is more valuable than purchased items but not necessary.

Informal Socializing

One of the most enjoyable parts of Epsilon Camp is meeting and making connections with other families. We encourage you to allow your camper large amounts of time for informal play with other campers and to sit and chat with other parents while you supervise this play. Many great friendships have been forged among Epsilon families.

Visitors

Epsilon Camp classes and the Parent Program are exclusively for campers and their parents or guardians. Please register all family members who will be on campus during camp, even for a brief period.

7. Students Doing Mathematics

Daily Assignments

To understand math, one needs to do math. For students in Euclid Level and above, faculty may give out daily assignments that serve as elaborations and clarifiers of the class discussion. These assignments are to be done in class and during Office Hours, with support from faculty, counselors, and peers. Campers tell us that this opportunity to work one-on-one with professors and in groups of friends is a favorite part of camp. ***Camp homework policy is that if an assignment is not completed by the end of Office Hours, the camper is not required to complete it. On the following day, students are expected to submit their work in class, even if it is not complete.*** If campers desire to complete unfinished assignments in their free time, they are welcome to do so, but we do not expect campers to forgo social activities or stay up late to complete assignments.

Note Taking

At Epsilon Camp, at other mathematics camps for older students, and at the university level, there is an emphasis on writing mathematics properly. While the students in Euclid Level and above should attempt to take some notes in class, we do not expect them to take copious notes that would take away their attention from the professor and impede communication with the class. Some students may find it easier to write mathematically using graph paper instead of lined or blank paper.

Electronics/Calculator Policy

Cell phone, smart watch, or tablet use by campers while under the supervision of Epsilon Camp faculty or staff, including during class, classroom transitions, or group mealtimes, is prohibited. Any emergencies or concerns on the part of the camper should be communicated directly to a counselor, faculty, or staff member.

Playing electronic games, such as games on phones or tablets, is prohibited during the academic day while under the supervision of camp faculty or staff.

Calculators are not required or encouraged at Epsilon Camp. We want to see practice of basic arithmetic mentally and on paper.

Outside Courses During Camp

Please ensure that, for the duration of Epsilon Camp, your camper is not enrolled in any other classes that have expectations of attendance and homework, ***including online classes***. We require campers to be fully engaged while at camp, with no other outside obligations.

8. Math Skills Prerequisites

Pythagoras Level (Ages 7–8)

While the focus of the Pythagoras Level is on concept exploration rather than skill development, the following skills are essential for success at camp. By the beginning of camp, campers should be able to:

- Add, subtract, multiply, and divide multi-digit numbers. 3-digit addition/subtraction and 1- by 3-digit multiplication should be effortless. 1-digit into 3-digit division should not interrupt their thought process.
- Add, subtract, multiply, and divide fractions without interrupting their thought process.
- Work with variables given by letters: evaluate an algebraic expression involving one variable, translate an arithmetic statement in English involving one variable to an algebraic expression, and multiply two linear expressions.
- Know what it means to “square” or “cube” a number and have some exposure to higher exponents.
- Have exposure to long division and square roots.

Euclid Level (Ages 9–10)

All Euclid Level campers must remedy any weaknesses that were noted on their Readiness Assessment before attending camp. Additionally, they should have the following skills:

- Fluency (techniques that can be performed effortlessly in the middle of some other complex activity):
 - Addition
 - Subtraction
 - Multiplication
 - Simple division
 - Place value
- Experience (techniques that require some thought, but not complete concentration):
 - Long division
 - Using percent
 - Adding fractions
 - Converting between fraction and decimal
 - Finding lowest common multiple and greatest common factor
 - Expanding brackets and working with order of operations
 - Working with several variables represented by letters or names (not just x)
 - Arithmetic and manipulation of variables

- Exponentials and square roots
- Using coordinates to specify a position on a plane or in 3D
- Understanding the meaning of “solving an equation”
- Geometric vocabulary
- Familiarity (techniques that can be completed readily, but might require full concentration):
 - Solving a linear equation
 - Using rates and units
 - Graphing functions
 - Working with inequalities
 - Factoring polynomials with integer solutions
 - Finding the prime factorization of an integer
 - Using a ruler and compass
 - Translating between expressions in English and algebraic expressions
 - Questioning why a mathematical process works
 - Reasoning logically; for example, solving logic puzzles

Gauss Level (Ages 10–11)

Campers entering Gauss Level should review their notes and work folders from the previous year. They should also work to develop “experience” and “fluency” in the techniques on the full list above.

Conway Level (Ages 11–12)

Campers entering Conway Level should review their notes and work folders from the last two years. They should have at least “experience” ability with everything on the list above and “fluency” in as many skills as possible.

9. Health and Safety Protocols

The safety of all participants is the highest priority at Epsilon Camp. The following health and safety protocols will be in effect for the duration of the camp.

Signing In and Out

Parents must sign each camper in and out with their counselor at the times indicated on the daily schedule. Once signed in with the counselor, campers will stay with their counselor group. Camper groups will be escorted from place to place (for example, from their classroom to the dining hall) by an Epsilon Camp staff member at all times. Students are expected to follow all directions of any camp staff member for the safety of themselves and others.

Campers and their parents/guardians must follow the sign-in and sign-out protocol. ***At no time should a parent remove their camper(s) from the classroom, meals, or other activities without first officially signing out their camper.*** No “verbal” sign-outs are allowed at any time. For convenience, parents will be able to authorize other adults at camp (that is, other campers’ parents) to sign their children in and out; details will be provided at the Parent Orientation.

Emergencies

In the case of a serious medical problem or other emergency affecting the student, we will attempt to notify parents or guardians immediately, while at the same time seeking prompt medical attention.

Upon arrival at camp, you will be provided with a contact number of the Epsilon Camp staff for use in urgent or emergency situations. You will also be given a number for Miami University Police: (513) 529-2222. If you wish, you can familiarize yourself with the [Miami University emergency procedures and preparedness](#) ahead of camp.

Guests and visitors to Miami University may choose to opt in to receive emergency notifications during their time on campus. Emergency notifications include on-campus events as well as severe weather events, such as thunderstorm warnings. You may text the phrase “muguest” to 79516 to receive emergency information by text messages. To opt out, you may reply STOP to cancel the service.

COVID-19 Protocols

Protocols related to COVID-19 will be detailed in a separate document, which will be posted on [our website](#). We will continue updating our COVID-19 protocols as we get closer to the start of camp. Please be aware that, due to the often unpredictable nature of the pandemic, many details and specifics will not be finalized until much closer to July, and that last-minute

changes may be necessary.

Other Health Considerations

A student diagnosed later than June 24, 2023 by their physician as having a serious or highly communicable disease (e.g., measles, pertussis, meningitis, etc.) will not be allowed to attend camp. If a student develops any such disease at camp, he or she will not be able to return to camp at any point after the diagnosis. There are no refunds of any kind issued after **May 1, 2023**. Epsilon Camp recommends travel insurance, such as [TravMark](#), to protect your travel, tuition, and room and board payments in case you or your camper(s) are unable to attend camp or must leave early, due to a medical or other emergency.

Nut Allergies

We have children attending camp who are severely allergic to peanuts and tree nuts. Because of these allergies, we request that you ***please do not bring tree nuts/peanuts or tree nut/peanut-containing products to any public area of the camp, including classroom areas and the dormitory common lounges***. We also ask that you carefully wash your hands after eating any peanut or tree-nut product in your private room.

10. Miami University Information

Maps

At check-in, you will be provided with an annotated map which marks the locations of residence halls, classroom buildings, and other locales relevant to Epsilon Camp. If you'd like to orient yourself to the Miami University campus, please see the following [interactive campus map](#) and [campus parking map](#).

Campus Amenities

Epsilon Camp families can make use of the [Recreational Sports Center](#), which includes a fitness facility with strength and cardio equipment, basketball courts, racquetball court, volleyball, pickleball, badminton, tennis, sand volleyball, a climbing center, and an [Aquatic Center](#) with a lap pool, leisure pool, and a spa. Access to various facilities is subject to availability and capacity, and may be affected by scheduled programming. Children 14 years and under must be directly supervised by a paying parent or legal guardian at all times in the rec center.

Pricing for rec center access is as follows:

- Daily: \$6 per individual; available for purchase at the rec center by showing your key access card.
- Weekly: \$18 per individual or \$34 per family; purchase through the conference services online store (link to be provided closer to the time of camp).
- Monthly: \$30 per individual or \$55 per family; purchase through the conference services online store (link to be provided closer to the time of camp).

A family is defined as at most two adult parents/guardians, as well as any minor children living in the household. If you pay for rec center access prior to your arrival on campus, your participant access card will be loaded at the time of check-in, and you will be able to access the rec center throughout your stay. If you make the purchase after arrival on campus, please allow for 12 hours for the access card to be updated.

Nearby Attractions

We encourage you to spend some time looking through the list of Oxford [area attractions](#). Some of the highlights include [Hueston Woods State Park](#), [Black Covered Bridge](#), and [Oxford Area Trails](#).

The Miami University [Natural Areas](#) are located around the campus and comprise over 1000 acres with 17 miles of hiking trails. Both virtual and printable [trail maps](#) are available. Some of the places to visit in the Natural Areas include [Bird Blind](#), [Butterfly Gardens](#), and [Peffer Park](#).

Local Day Camps

Families bringing non-camper siblings to camp may be interested in local day camps:

- [Miami Recreation](#) camps for children ages 7 and up
- [Oxford Parks & Recreation](#) camps for children ages 3-5 (Little POPPERS! Camp) and entering grades K-6 (Camp POP!). See the [Program Guide](#) (pages 11-13) for more information; registration opens on April 3.
- [YMCA Camp Campbell Guard](#) for children ages 7 and up (20 minutes away)

Miami University Rules and Regulations

All campers, attendees, and guests of Epsilon Camp must abide by the following rules and regulations of the Miami University at all times:

- [Regulations for On-Campus Living](#)
- [Minors on Campus Policy](#)
- [Responsible Use of University Computing Resources Policy](#)
- [Illegal or Unauthorized Use of University Computing Resources Policy](#)
- Parking Policies: [Parking Areas](#), [Parking Violations](#), [Parking Appeals](#)
- [Unmanned Aircraft System \(Drones and Model Aircraft\) Policy](#)
- [Smoke and Tobacco-Free Environment Policy](#)
- [Drug-Free Workplace Policy](#)
- [COVID-19 Policy](#)
- [Weapons Policy](#)
- [Law and Order Policy](#)
- [Buildings and Grounds Policy](#)
- [Policy Prohibiting Harassment and Discrimination](#)

These and all other Miami University policies can be found in the [Miami University policy library](#).

It is extremely important that Epsilon Camp attendees represent a responsible and respectful Epsilon community when on the Miami University campus. To this end, all attendees must sign and abide by the camp's Code of Conduct. The violation of this Code of Conduct by a camper or a member of his or her family/participant group can be grounds for automatic suspension or dismissal from camp.

Please note that our contract with Miami University ***does not allow Epsilon Camp participants to serve, furnish, sell, or consume alcohol on campus.***

Miami University campuses are designated Smoke Free Environments. ***Smoking and all tobacco related products are prohibited*** in all University owned facilities and on all University owned grounds.